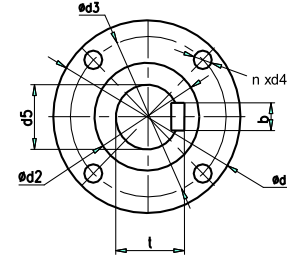
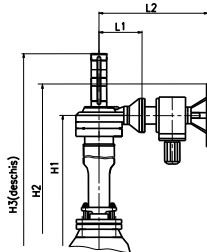
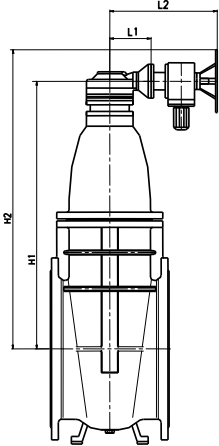


TN – tija neascendentă
NRS – non rising stem

TA – tija ascendentă
OS&Y – rising stem

Dimensiuni cuplare actiune electrica /
Connecting dimensions of electric actuator



ACTIONARE ELECTRICA / ELECTRIC ACTUATION - echipare standard cu mecanism NOTOR in variantele / standard equipped with NOTOR actuator in the followings variants::

- NORMAL + cofret de forta si comanda / NORMAL - with electric switch box;
- ANTIEX Exd II BT 4 – fara cofret / ANTIEX Exd II BT 4 – without electric switch box;

(dimensiuni in mm / dimensions in mm)

DN	L1	L2	H1		H2		H3	Cursa x pasul Stroke x pitch	CARACTERISTICI NOTOR NOTOR CHARACTERISTICS				Durata cursei Stroke duration (s)	Masa totala Total weight ≈(kg)	
			TN / NRS	TA / OS&Y	TN / NRS	TA / OS&Y			Tip Type	Moment maxim Max. torque (daNm)	Turatie iesire Output speed (rot/min)	Putere Power (kW)		TN / NRS	TA / OS&Y
700	168	512	1600	2400	1800	2600	3220	735 x 14	N 2 AS (+CR10)	25	28	0.75	450	915	980
800			1665	2507	1865	2707	3417	835 x 16					460	1291	1388
1000	216	560	2093	3089	2293	2493	4160	1045 x 20	N 2 AS (+CR20)				641	2336	2621
1200			2435	3649	2635	2835	4970	1245 x 10					1570	4196	4311

NOTA : constructie si materiale conform fisa RSP-10 pentru DN700 si RSP –2.5 pentru DN800÷1200 /
NOTE : design and materials in conformity with the technical sheet RSP-10 for DN700 and RSP –2.5 for DN800÷1200

CERINTE PENTRU MECANISMUL ELECTRIC DE ACTIONARE / REQUIREMENTS FOR ELECTRIC ACTUATOR:

(dimensiuni in mm / dimensions in mm)

DN	700	800	1000	1200
Nr. rotatii / cursa Rotations/stroke	212	212	299	731
Moment min. actionare(daNm) Min. driving torque (daNm)	15	24	21	25
Flanse prindere mec.ISO5210 Actuator connecting flanges ISO 5210	F14-B1			
d1	175			
d2	100			
d3	140			
n x d4	4 x 18			
d5	60			
t	64.4			
b	18			

Pentru confirmare va rugam folositi fisa tehnica contractuala / For confirmation, please use the technical sheet of agreement (FTC 2)